



DATAFLOW™ II System

Complete, integrated, real-time milking management and cow monitoring solution

The DataFlow™ II System is a real-time herd management solution. It provides the herd manager as well as the milking pit operator with a set of tools designed to help with daily tasks and work in a more efficient and productive way. The system provides powerful management tools, including reports, graphs, analytics, task lists, and lifetime cow card history. The system also enables control and support of other components, such as sorting gates, individual feeding, in-parlor messaging board, and others.

Advanced Herd Management Solution

Comprising hardware and software, the DataFlow II System controls the whole milking process and automatically collects and analyzes data from the monitoring tags.

- Online milking, monitoring, and milk production using Allflex FreeFlow™ Accurate heat detection and advanced health monitoring
- Graphs, reports and analysis - the exact information you need when you need it!
- Daily task lists and actionable information
- Real-time notifications including labor-related alerts
- Synchronization and connectivity with third-party solutions

Easy to use and flexible solution

Our philosophy is to keep the user interface as simple as possible, avoiding complicated panels while delivering the right information at the right time.

Milking operator:

- The system presents only the exact information required for milking pit operation, at the individual MC200 milking points and on a central LCD screen
- Relevant information such as sick cows, dangerous cows, or cows that are under-producing, is visible at a glance from the milking point
- The operator is able to enter information directly from the pit

Herd Manager:

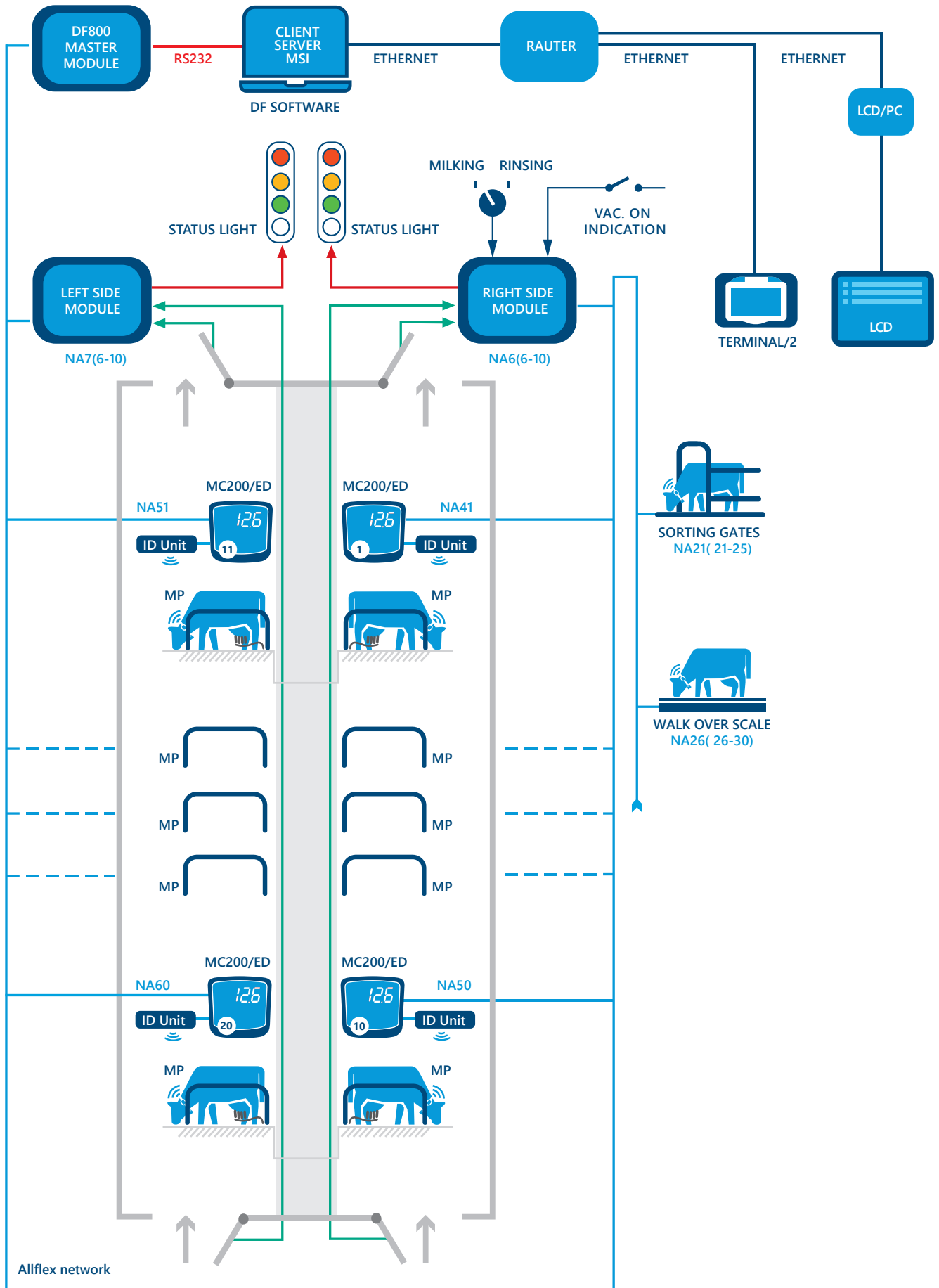
- Customizable interface, reports and graphs
- Full support for multiple users (such as herd manager, veterinarian or nutritionist), multiple herds, and different milking parlors
- All data can be accessed from distant locations, including home and mobile phone

Investment protection

The DataFlow II System works with monitoring tags and milking control systems, including the FreeFlow™ milk sensor and pulsators. The system is designed for scalability so the farmer can easily expand his equipment according to the farm's needs and growth.

- Highly durable, with minimal maintenance required
- Simple to install
- Can be easily added to any existing parlor to protect previous investments
- Upgradable - can grow with the herd and needs

Example of system layout - side by side parlor



* The above layout is for illustration purposes only. Solutions available for other parlor configurations as well (rotary, midi-line, herring bone and more)

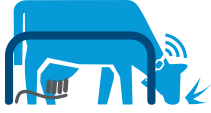
Auxilliary systems



In-parlor messaging board



Walk-on scale



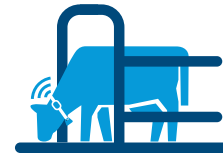
In-parlor individual feeding



Out-of-parlor individual feeding



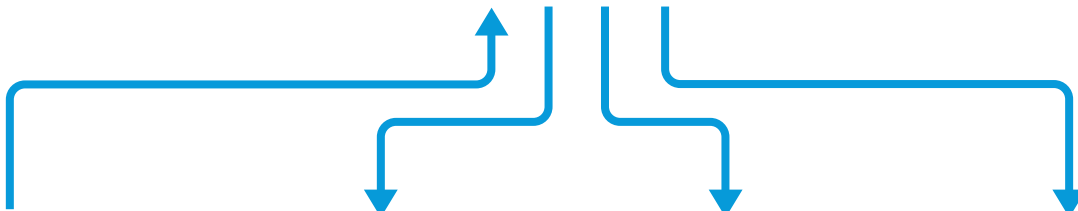
In-parlor terminal



Sorting gates

In-parlor

Out-of-parlor



Rumination and activity data



Automatic 3rd party data import



DF II application



Actionable information

- Group & herd reports
- Milking efficiency
- Cows in heat
- Working lists
- Sick cows
- Farm trends
- SMS and email alerts



Milk and conductivity records



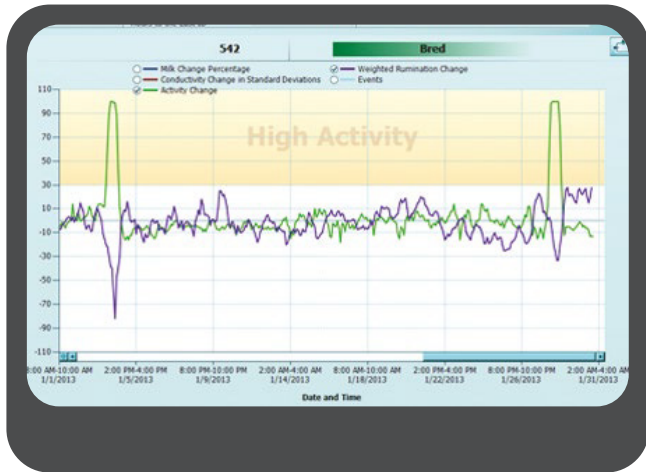
Automatic 3rd party data export



MSD
Animal Health

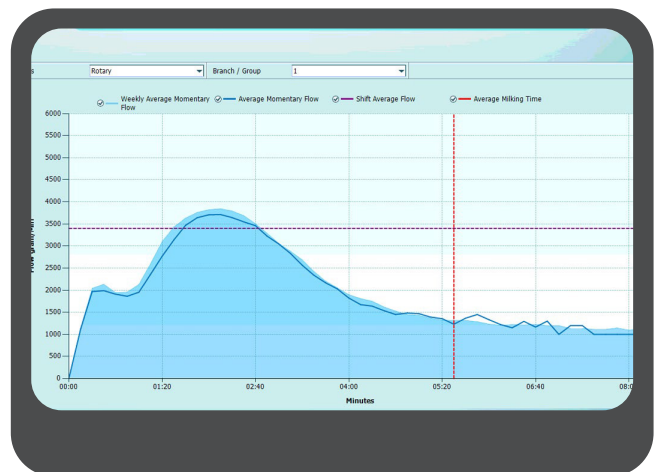


Simple and intuitive user interface and reports



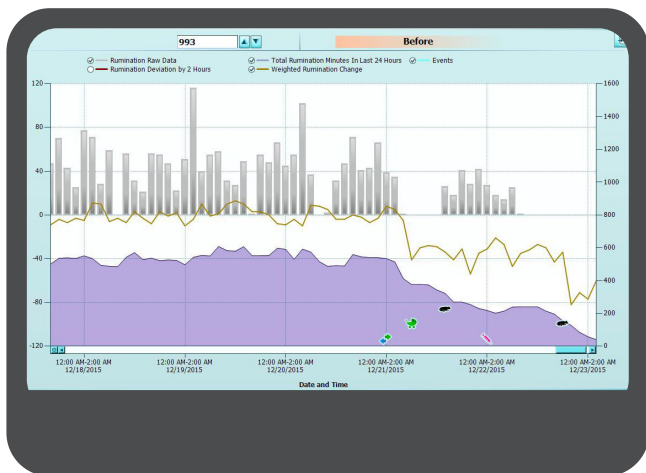
Heat detection

The system recognizes irregular activity and rumination caused by non heat-related external events and isolates the data from the heat detection. You can confidently handle all heat detection using this system alone, without visual observation and with full peace of mind that heats are being detected.



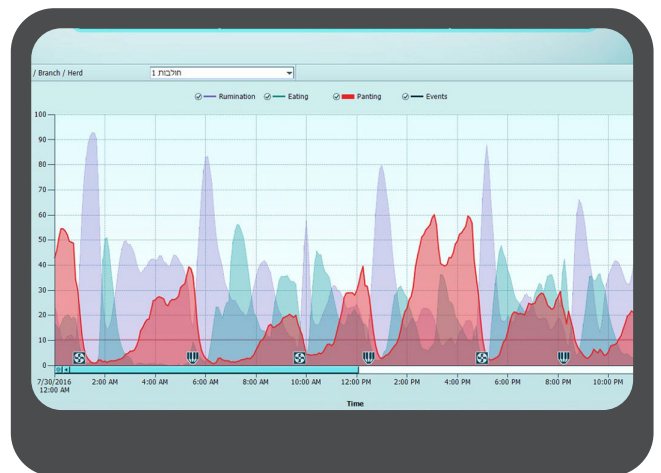
Milking control

Real-time milking parlor management - monitoring the milking Comprehensive information is displayed in easy-to-read reports and graphs.



Health monitoring

The system uniquely combines rumination, movement, and movement intensity measurement, recognizing behavior patterns. Individually benchmarked rumination measurements are combined with the activity information, delivering exceptional heat detection accuracy by creating the classic "diamond" shape, making heats even more obvious.

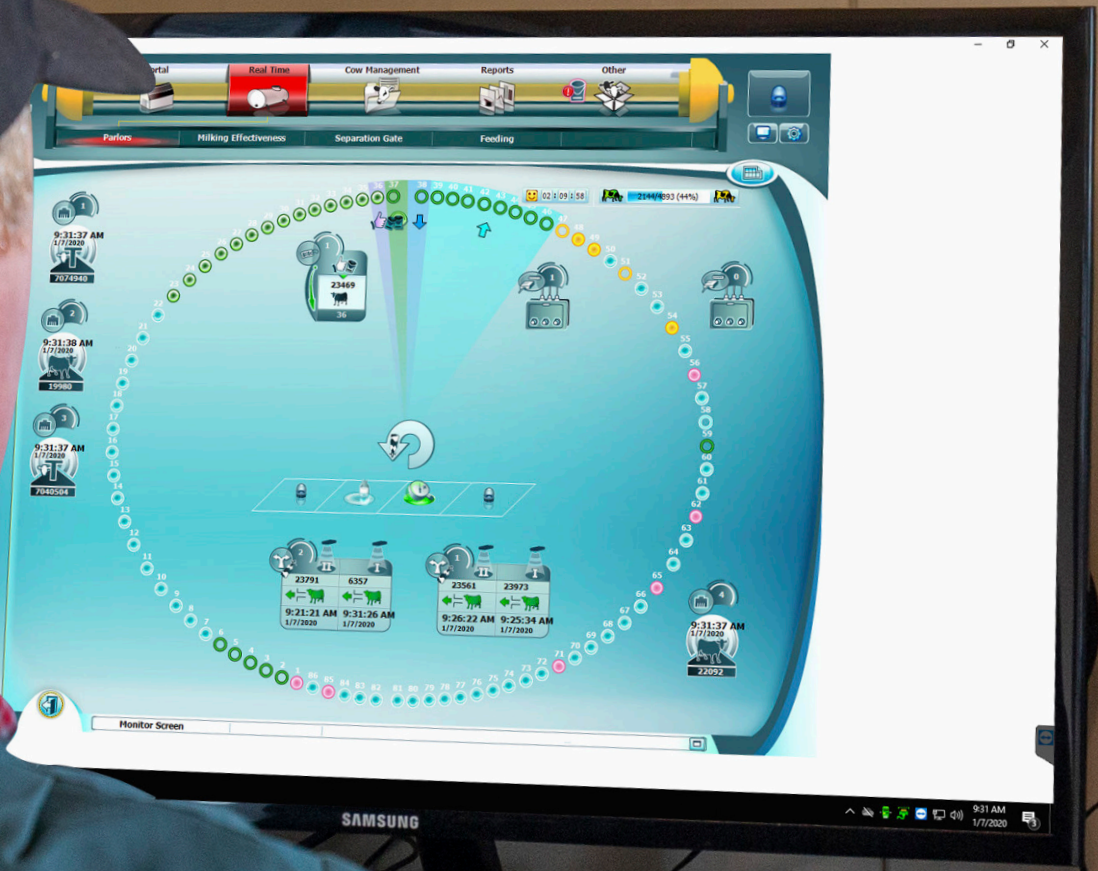


Group monitoring

Specific groups react to ration formulation changes or changes in the mixing or feeding protocol. Rumination monitoring, with customizable analysis and reports, provides timely and accurate insight into the effectiveness of ration or feeding changes.

Group Heat Stress monitoring displays the current status and 48-hour trend of panting, ruminating and eating, allowing the farmer to see immediately if a group is getting overheated and to easily analyze the effectiveness of his farm heat mitigation strategies. Using this graph together with the addition of reoccurring group events like milking, feeding, and cooling, will help the farm to evaluate and adjust its cooling regimens

*This product is not intended to diagnose, treat, cure, or prevent any disease in animals. For the diagnosis, treatment, cure, or prevention of disease in animals, you should consult your veterinarian. The accuracy of the data collected and presented through this product is not intended to match that of medical devices or scientific measurement devices."





About MSD Animal Health Technology Solutions

MSD Animal Health Technology Solutions is the world leader in the design, development, manufacturing and delivery of solutions for animal identification, monitoring and traceability. Our data-driven solutions are used by farmers, companies and countries to manage hundreds of millions of animals worldwide. By putting intelligent, actionable management information into farmers' hands, our solutions empower them to act in a timely manner in consultation with Veterinarian to safeguard their animals' health and wellbeing, while achieving optimal production outcomes for a healthy food supply. MSD Animal Health Technology Solutions is a livestock portfolio of digital products within MSD Animal Health.

Through its commitment to the Science of Healthier Animals®, MSD Animal Health offers veterinarians, farmers, pet owners and governments one of the wide ranges of veterinary pharmaceuticals, vaccines and health management solutions and services as well as an extensive suite of digitally connected identification, traceability and monitoring products. MSD Animal Health is dedicated to preserving and improving the health, wellbeing and performance of animals and the people who care for them.

Copyright® 2023 Merck & Co., Inc., Rahway, NJ USA, and its affiliates. All rights reserved. The information contained herein is subject to change without notice. The only warranties for products and services are set forth in the express warranty statements accompanying such products and services. Nothing herein should be construed as constituting an additional warranty. Intervet India Pvt Ltd shall not be liable for technical or editorial errors or omissions contained herein.

Intervet India Pvt. Ltd.

6th Floor, Tower 5, World Trade Center, Survey No 1, Kharadi, Pune – 411014,
Maharashtra, India Ph. No. +91 20 66294700/01;
Email Id – infoin-india@merck.com; www.msd-animal-health.co.in